

Canon

imageFORCE
C3150/C3135
C3130/C3126

THE POWER OF NEXT



- Color A3 Multifunction Printer
- Prints up to 50 ppm
(BW/Color, Letter)
- Scans up to 270 ipm
(Up to 300 dpi BW/Color Duplex)
- Up to 4800 x 2400 dpi Print Resolution

imageFORCE C3150 device shown with optional accessories.



imageFORCE C3100 Series

Built for today's busy mid-volume print environments, the imageFORCE C3100 Series delivers **tactical** performance with a **reliable** design.

Engineered for everyday productivity, it is designed to provide outstanding image quality and enhanced efficiency within a compact design.

THE POWER OF NEXT

To push the boundaries of what's possible, you must be bold. The **Power of Next** represents Canon's latest phase of ambitious and advanced print innovation with the comprehensive line-up of imageFORCE technology. This highly productive lineup is designed to help you **print better, do more, and stay ahead** in today's digital workplace. Backed by a strong commitment to the *Kyosei* philosophy—which promotes living and working together for the common good—Canon ushers in a new era of print.

Performance for Any Pace



50 ppm

Ideal for users printing and scanning in busy mid-volume professional settings.



35 ppm

Built for small teams that need quick, reliable document turnaround for daily office tasks.



30 ppm

Designed for small offices with steady, moderate printing and scanning needs.



26 ppm

Best for light-use workspaces requiring high-quality color on an occasional basis.



PRINT BETTER

BRILLIANT QUALITY AND RELIABLE RESULTS

Achieve stunning, high-resolution prints with advanced precision, vibrant color quality, and Canon's professional-grade reliability.

OUTSTANDING IMAGE QUALITY

D² Exposure Technology (Defined and Detailed)



Cutting-Edge OLED Technology: Combines Solid State Exposure using OLED and Silicon technologies for excellent image quality and consistency.



Brilliant 4800 dpi: Canon's unique D² Exposure technology is designed to achieve 4800 x 2400 dpi resolution.



Outstanding Precision: Helps minimize color shift and provides consistent color registration.



Sharp and Crisp Text: Printed text appears smooth, highly defined against colored backgrounds.



PRINT BETTER, BUILT TO PERFORM

The imageFORCE C3100 Series features Canon's unique and sturdy anti-loosening welded frame, designed to handle long-term usage and promote peak performance.

HELP EXPAND PRINT EFFICIENCY WITH WORKFLOW SOLUTIONS

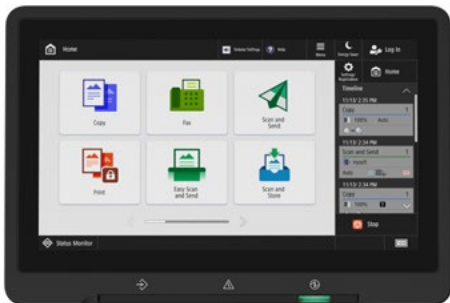
Manage tasks, track costs, and print and scan all on one platform with the optional uniFLOW Online, a powerful cloud-based solution that helps to reduce IT workload and adds flexibility to your print environment.



DO MORE

INTUITIVE WORKFLOWS FOR EVERYDAY USE

Help elevate daily efficiency with seamless workflows, simple and intuitive print technology, integrated solutions, and flexible media handling.



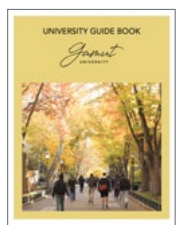
SIMPLE USER INTERFACE

Each model within the imageFORCE line-up supports a consistent user interface, enabling operators to effortlessly run the device with a minimal learning curve.

- Large 10.1" responsive and intuitive touch screen.
- Familiar interface with icons that are categorized by color.
- Easy customization settings for language, accessibility, and display preferences.

FLEXIBLE FINISHING CAPABILITIES

Support for various paper sizes, finishes, and media types that adapt seamlessly to diverse office printing needs.



Brochures



Postcards



Flyers



Booklets



Envelopes



PRINTING THAT PERFORMS. SCANNING THAT DELIVERS.

Performance doesn't need to stop at print. This highly capable color multifunction device is built to help boost your productivity—empowering your workforce to handle everyday tasks with speed, accuracy, and smart document handling, from start to finish.

Scan Speeds of up to 270 ipm: Scan full-color documents quickly and accurately at single-pass duplex scan speeds.

Digitalization: Whether you're digitizing reports, ID cards, or mixed media files, you can capture clean, high-resolution scans that integrate seamlessly into your digital workflows.



CLOUD READY SOLUTIONS

Canon's imageFORCE systems have the ability to integrate seamlessly with a range of powerful Canon and third-party software to help your workflow evolve. For example, you can easily print and scan to—and from—your favorite cloud storage services with the optional Cloud Connector.¹



GAIN FULL CONTROL OF YOUR FLEET

Centralize the management of your print fleet and help maximize uptime with the support of imageWARE Enterprise Management Console. imageWARE Enterprise Management Console helps to monitor device status and consumables, apply security settings, update firmware, capture meter readings, and much more—virtually anytime and anywhere.



HASSLE-FREE SETUP AND MAINTENANCE

Canon U.S.A.'s range of Smart Services are available as an option and are designed to help support you at every stage of the device management life cycle. Benefits include:

- Setting up and deploying your devices quickly.
- Enabling proactive service and fast issue resolution.
- Access upgrades and replace parts with ease.

STAY AHEAD

FUTURE-READY. SECURITY-FOCUSED. LOW IMPACT DESIGN.

Make the move forward with cutting-edge print technology that is built to help your organization be more productive and more prepared for the unexpected.

SECURITY FEATURES DESIGNED TO HELP SAFEGUARD YOUR INFRASTRUCTURE

Implement security features designed with the modern workplace in mind. These include:



Security Environment Estimation:

Recommends security settings based on the device's operating environment.



Verify System at Startup²:

At device start-up, helps to verify that the boot process, firmware, and applications have not been altered or tampered with. Includes automatic recovery of boot process.



FIPS 140-3 Storage Encryption:

A U.S. government standard for cryptographic modules, supporting data encryption and security in hardware and software systems.



SIEM Integration³:

The ability to integrate your print devices into your universal security and event monitoring strategy.



Trellix™ Embedded Control²:

Utilizes whitelisting to help prevent execution of unrecognized malware or tampering of existing firmware/applications.

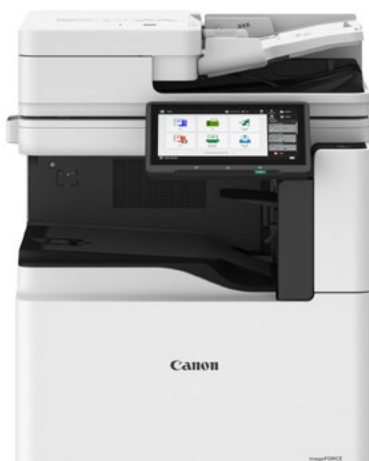


Control Access:

Provides flexible authentication methods for PIN, username/password, or badge authentication accessibility, and display preferences.

CANON'S FUTURE-READY UNIFIED FIRMWARE PLATFORM

With Canon's Unified Firmware Platform (UFP), a common source code for firmware development embedded within the imageFORCE products, your device can benefit from regular updates—which may include additional functionality to existing models—and the latest features.



BUILT WITH SUSTAINABILITY FEATURES

From product design to power use, Canon's commitment to the environment can be seen with the imageFORCE series of printers. Features include:

Low Energy Consumption: A combination of highly efficient fusing technologies and low-melting-point toner helps to minimize power requirements and achieve low energy consumption.

Cardboard Packaging: Canon has reduced its use of plastic materials by switching from conventional foam packaging to interior cardboard packaging materials for the main unit—a material that is widely recyclable.

Prestigious Certifications: ENERGY STAR® certified and rated EPEAT Gold.

C3100 SERIES CONFIGURATION AND ACCESSORIES

imageFORCE
C3150/C3135
C3130/C3126

Internal Output Options



Inner Finisher-N1

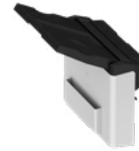
- 2-tray 545-sheet capacity
- Corner and double stapling up to 50 sheets within the footprint of the main unit
- Supports Staple-free Stapling and Staple On Demand
- Supports optional internal 2/3-hole puncher (Inner 2/3 Hole Puncher-D1)



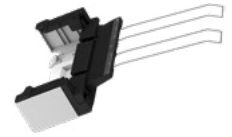
Inner 2Way Tray-M1

- Requires 1st Copy Tray Kit-C1

Long Sheet Option



Long Sheet Catch Tray-F1



Long Sheet Feeding Tray-A1

- Can support up to 47.25-inch sheet

Finishing Options



Booklet Finisher-AH1

- 2-tray, 3,250-sheet capacity
- Corner and double stapling up to 50 sheets
- Saddle Stitch Staple up to 20 sheets and saddle-folding up to 3 sheets
- Supports Staple-free Stapling and Staple On Demand
- Supports optional internal 2/3-hole puncher (2/3 Hole Puncher Unit-A1)



Staple Finisher-AH1

- 2-tray, 3,250-sheet capacity
- Corner and double stapling up to 50 sheets
- Supports Staple-free Stapling and Staple On Demand
- Supports optional internal 2/3-hole puncher (2/3 Hole Puncher Unit-A1)



Staple Finisher Lite-B1

- Staple capacity of up to 50 sheets
- Output capacity of up to 1,750 sheets
- Staple On Demand: Up to 50 sheets



Paper Feeding Options



Cassette Feeding Unit-AZ1

- Two 550-sheet cassettes
- Supports up to 12" x 18"
- Supports 14 lb. Bond to 140 lb. Index
- Available for imageFORCE C3150 only



Cassette Feeding Unit-BB1

- Two 550-sheet cassettes
- Supports up to 12" x 18"
- Supports 14 lb. Bond to 140 lb. Index
- Available for the C3135/C3130/C3126 Only



High-Capacity Cassette Feeding Unit-G1

- 2,450-sheet capacity
- Supports LTR
- Supports 14 lb. Bond to 140 lb. Index



Cabinet Type-Y



Paper Deck-F3

- 2,700-sheet capacity
- Supports LTR
- Supports 14 lb. Bond to 140 lb. Index

PRINTER SPECIFICATIONS

imageFORCE
C3150/C3135
C3130/C3126

Technology/Type	OLED/A3 Color Multifunction
Core Functions	Standard: Print, Copy, Scan, Send, Store Optional: Fax, Up to 4 lines
Print/Copy Speed (BW)	imageFORCE C3150: <ul style="list-style-type: none"> • Up to 50 ppm (Letter) • Up to 50 ppm (Statement-R) • Up to 30 ppm (Letter-R) • Up to 25 ppm (11" x 17") imageFORCE C3135: <ul style="list-style-type: none"> • Up to 35 ppm (Letter) • Up to 35 ppm (Statement-R) • Up to 23 ppm (Letter-R) • Up to 17 ppm (11" x 17") imageFORCE C3130: <ul style="list-style-type: none"> • Up to 30 ppm (Letter) • Up to 30ppm (Statement-R) • Up to 20 ppm (Letter-R) • Up to 15 ppm (11" x 17") imageFORCE C3126: <ul style="list-style-type: none"> • Up to 26 ppm (Letter) • Up to 26 ppm (Statement-R) • Up to 20 ppm (Letter-R) • Up to 15 ppm (11" x 17")
Scan Speed (ipm, BW/CL, Letter)	Single-Scanning: Up to 135/135 (300 x 300 dpi, send), Up to 80/80 (600 x 600 dpi, copy) Double Sided-Scanning Up to 270/270 (300 x 300 dpi, send), Up to 160/90 (600 x 600 dpi, copy)
Memory	RAM 5.0 GB
Solid-State Drive	Standard: 256 GB Optional: 1 TB
Warm-up Time	Quick Startup Mode: 4 seconds or less ⁴ From Sleep Mode: 10 seconds or less ⁴ From Power On: 10 seconds or less ⁵
Paper Supply Capacity (LTR, 20 lb. Bond)	Standard: 1,200 sheets Maximum: 6,350 sheets
Supported Media Types	Upper Cassette: Thin, Plain, Recycled, Color, Heavy, Bond, Transparency, Pre-punched, Letterhead, Envelope ⁶ Lower Cassette: Thin, Plain, Recycled, Color, Heavy, Bond, Transparency, Pre-punched, Letterhead, Envelope ⁷ Multi-purpose Tray: Thin, Plain, Recycled, Color, Heavy, Coated, Tracing, Bond, Transparency, Labels, Pre-punched, Letterhead, Envelope
Supported Media Sizes	Upper Cassette: Standard size: Letter, Executive, Statement-R. Custom Size: 4-1/8" x 5-7/8" to 11-3/4" x 8-1/2" (105.0 x 148.0 mm to 297.0 x 215.9 mm). Envelopes ⁶ : ISO-C5 Lower Cassette: Standard size: 12" x 18", 11" x 17", Legal, Letter, Letter-R, Executive, Statement-R. Custom Size: 4-1/8" x 5-7/8" to 12" x 18" (105.0 x 148.0 mm to 304.8 x 457.2 mm) Envelopes ⁷ : COM10 No.10, Monarch, DL Multi-purpose Tray: Standard size: 12" x 18", 11" x 17", Legal, Letter, Letter-R, Executive, Statement, Statement-R. Custom size: 3-7/8" x 5-1/2" to 12-5/8" x 18" (98.4 x 139.7 mm to 320.0 x 457.2 mm). Free size: 4" x 5-7/8" to 12" x 18". Long sheet ⁸ : 3-7/8" x 18" to 12-5/8" x 47-1/4". Envelopes: COM10 No.10, Monarch, ISO-C5, DL. Envelope custom size: 3-7/8" x 3-7/8" to 12-5/8" x 18".
Supported Media Weights	Upper Cassette: 14 lb bond to 140 lb index (52 to 256 gsm) Lower Cassette: 14 lb bond to 140 lb index (52 to 256 gsm) Multi-purpose tray: 14 lb bond to 110 lb cover (52 to 300 gsm) Duplexing: 14 lb bond to 80 lb cover (52 to 220 gsm)
Dimensions (W x D x H) ⁹	22-1/4" x 29-3/8" x 35-3/8" (565 x 745 x 897 mm)
Weight	Approx. 200.6 lb (91 kg) ¹⁰
Environmental Standards	ENERGY STAR [®] Certified EPEAT Gold

¹ Term license required.

² This feature is off by default and must be turned on by the user. Warm up times are affected once turned on.

³ Third-party SIEM system required. Subject to third-party SIEM system terms and conditions. Canon cannot ensure compatibility with all third-party SIEM systems.

⁴ Time from device power-on to when the copy icon appears and is enabled to operate on the touch panel display.

⁵ Time from device power-on, until copy ready (not print reservation).

⁶ Envelope Feeder Attachment B (standard) is required except ISO-C5.

⁷ Envelope Feeder Attachment A (standard) is required.

⁸ Long Sheet Feeding Tray-A1 is required and Staple Finisher-AH1 or Booklet Finisher-AH1 is required.

⁹ Standard (including 1-Pass DADF).

¹⁰ Including the optional 1st Copy Tray Kit-C1 and regular toner.

WHAT WILL YOU CREATE WITH THE POWER OF NEXT?



Canon

Trellix

CANON
GENUINE
TONER, CARTRIDGE
& PARTS

repeat
GOLD

ENERGY STAR
ENERGY STAR

usa.canon.com/business

As an ENERGY STAR® Partner, Canon U.S.A., Inc. has certified this model as meeting the ENERGY STAR® energy efficiency criteria through an EPA recognized certification body. ENERGY STAR® and the ENERGY STAR® mark are registered U.S. marks. Canon, imageFORCE, imagePASS, and the GENUINE logo are registered trademarks or trademarks of Canon Inc. in the United States and may also be registered trademarks or trademarks in other countries. Canon products offer certain security features, yet many variables can impact the security of your devices and data. Canon does not warrant that use of its security features or recommendations will prevent security issues. Customers should perform their own due diligence and consult with their security expert to determine what security features to implement for their organization. Nothing herein should be construed as legal or regulatory advice concerning applicable laws; customers must have their own qualified counsel determine the feasibility of a solution as it relates to regulatory and statutory compliance. Some security features may impact functionality/performance; you may want to test these settings in your environment. Trellix and the Trellix logo are trademarks or registered trademarks of Musarubra US LLC or its subsidiaries in the U.S. and other countries. All other referenced product names and marks are trademarks of their respective owners. All printer output images are simulated. All features presented in this brochure may not apply to all Series and/or products and may be optional; please check with your Canon Authorized Representative for details. Products shown with optional accessories. Subscription to a third-party cloud service required. Subject to third-party cloud service providers terms and conditions. uniFLOW is a registered trademark of NT-ware Systemprogrammierung GmbH. Canon U.S.A. does not provide legal counsel or regulatory compliance consultancy, including without limitation, Sarbanes-Oxley, HIPAA, GLBA, Check 21, or the USA Patriot Act. Each customer must have its own qualified counsel determine the advisability of a particular solution as it relates to regulatory and statutory compliance. Specifications and availability subject to change without notice. Not responsible for typographical errors.

©2026 Canon U.S.A., Inc. All rights reserved.

04/26-0622-13042